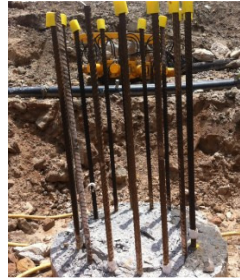


Thermotec Closed Cell
Debonding Foam



Thermotec Closed Cell Debonding Foam is manufactured from closed cell low density polyethylene foam. The product is manufactured in a range of sizes and has excellent compression and recovery properties

Material:	Low density polyethylene closed cell foam
Density:	40-50kg/m ³ nominal
Service Temperature:	-40C to +90C
Water Absorption:	<2% by volume after 28 days submersion
Compression Recovery:	Excellent – 95%
Compression Deflection:	Excellent - >20.5KPa
Compression Resistance:	Excellent - <335kPa
Flexibility:	Excellent

- Compatible with all Rebar sizes
- Ideal for Pile reinforcement
- Available in two metre lengths
- Excellent rebound recovery
- Long life polyethylene foam ensures maximum protection of concrete and steel
- Easy to fit application
- Anti-vibration properties
- Low moisture absorption
- Does not discolour or stain
- Special sizes made to order for project quantities
- Made in Australia